

FloridaCHARTS Newsletter - Spring 2008

To subscribe or unsubscribe: www.floridacharts.com/charts/newsletter.aspx

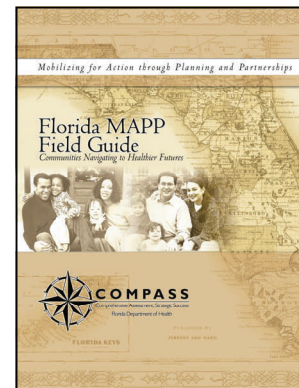
New school-aged child & adolescent health profile

The new [School-aged Child and Adolescent Health Profile](#) includes a county-level view of the well-being of children of school age. This profile is especially useful for community groups doing local assessments, grant writing and evaluation of programs for this population. Users will find county data for: risk behaviors, demographics, school attendance, mental health, and much more. Several Florida agencies, including the Department of Education, the Department of Juvenile Justice, the Department of Children and Families, and the Department of Health, contributed to this profile.



Community health assessment in Miami-Dade County

The [Consortium for a Healthier Miami-Dade](#) recently convened partners for their MAPP orientation meeting. The day-long meeting included an overview of the MAPP process, discussion of anticipated benefits, readiness assessment including review of existing data resources and other assets, and visioning. The Consortium works in a committee structure that allows participants to work within their areas of interest and expertise. These committees include: Elder Issues, Health and Built Environment, Health Promotion and Disease Prevention, Marketing, Oral Health, School Based Issues and Worksite Wellness.



Did you know?

You can find population estimates for individual ages or age groups in the FloridaCHARTS.com Population Query. Click "Population Estimates" from the data queries section of the CHARTS menu. For the column variable, select "Custom Age Group". Enter the age range desired, or for a specific age estimate (for example, for one-year olds, enter from 1 to 1). Select other options such as counties, race, age, sex, ethnicity and year, and click "generate data" to see results.

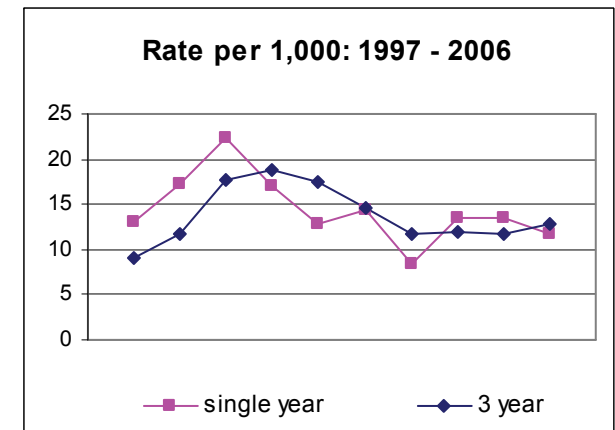
Select row variable ^{1, 2} :	County
Select column variable ^{1, 2} :	Year
Select Counties: (Select desired county and then click "Add" to add the county to the report. Healthy Start Coalitions can only be selected one at a time.)	<input checked="" type="radio"/> Counties <input type="radio"/> Healthy Start Coa All County Alachua Baker Bay Bradford
Filters: Use filters to limit your results	Race: All Age: All Sex: All

Statistical notes

Multi-year rates

Rates based on small numbers of events can fluctuate widely from year to year for reasons other than a change in the underlying health conditions. These variations occur often in counties with small populations or when the event being measured does not occur frequently. This variation can affect the interpretation of data. A basic strategy for reducing the effects of year to year fluctuations is to aggregate data for several years. As the example shows below, combining years provides a more stable rate with less fluctuation than the single years.

Example: Infant Mortality Rates for a small county



In other words, a small county with rates of 8 per 1,000 one year and 16 per 1,000 the next, isn't necessarily experiencing a crisis. Examining the three-year rates over the same time period will usually show less change because the effects of random variation are reduced.